

Hardwick Road, Pontefract



£700 Per Month



2



1



1



70

Crown Estate Agents are delighted to offer this two bedroom terraced property in Featherstone. The property is within easy walking distance of all amenities and Featherstone town centre, making it an ideal fit for couples and small families alike. Call us today to book a viewing!



- One Reception Room
- Kitchen
- Two First Floor Bedrooms
- Bathroom with Shower
- Double Glazed Throughout
- Enclosed Garden to the Rear
- Council Tax Band A
- EPC rating C

Call **01977 285 111** to view this property or visit www.crownestateagents.com

Opening hours:
Mon - Fri 9am - 5pm
Sat 10am - 2pm

Lounge

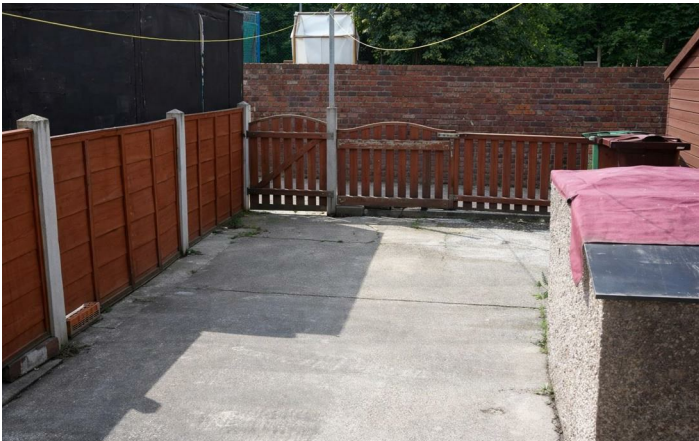
Kitchen

Master Bedroom

Bedroom Two

Bathroom

Rear Yard



FLOOR PLAN



Energy Efficiency Rating

	Current	Potential
<i>Very energy efficient - lower running costs</i>		
(92 plus) A		90
(81-91) B		
(69-80) C	70	
(55-68) D		
(39-54) E		
(21-38) F		
(1-20) G		
<i>Not energy efficient - higher running costs</i>		

England & Wales EU Directive 2002/91/EC

Please call our Castle Dwellings Ltd Office on 01977 285 111 if you wish to arrange a viewing appointment for this property or if you require further information.

These particulars, whilst believed to be accurate are set out as a general outline only for guidance and do not constitute any part of an offer or contract. Intending purchasers should not rely on them as statements of representation of fact, but must satisfy themselves by inspection or otherwise as to their accuracy. No person in this firm's employment has the authority to make or give any representation or warranty in respect of the property.